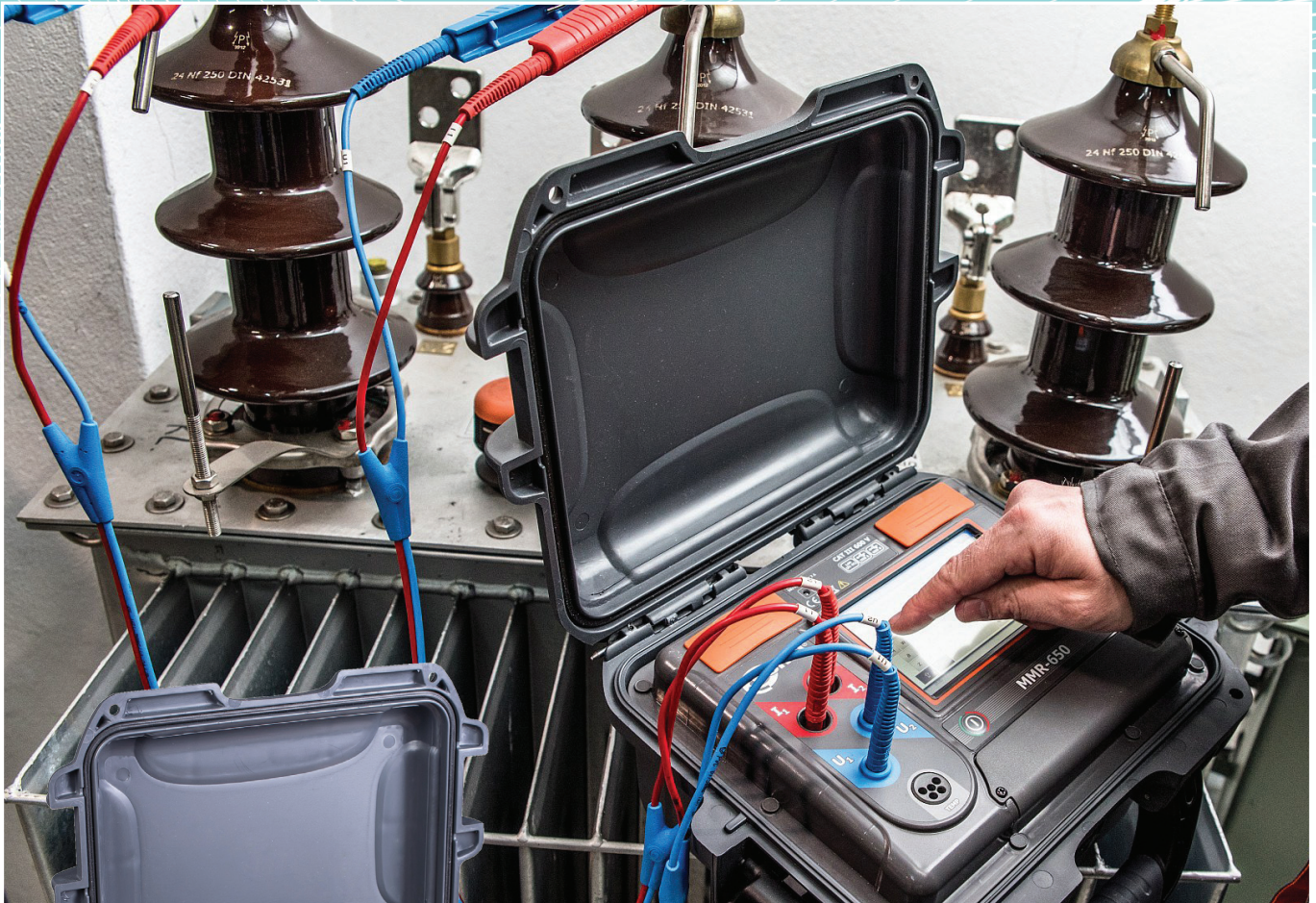




Sonel MMR-650

*Micro-ohmmeter and
Transformer Ohmmeter in One!*



Until now separate instruments were required to comprehensively test resistive and inductive devices.

Sonel has merged both applications into a single economical and compact instrument with the new Li-Ion powered 10 Amp MMR-650.

The Sonel MMR-650 can be used to measure the resistance of any device from a busbar or cable joint, switch or breaker contact to the windings of a power transformer, motor or generator.

Winding discharge and de-magnetisation of the test object are included!

Distributed and serviced by:

Pacific Test Equipment Pty Ltd

27/7 Anella Avenue Castle Hill 2154 | T +61 2 9659 2300

sales@pacifictest.com.au | www.pacifictest.com.au

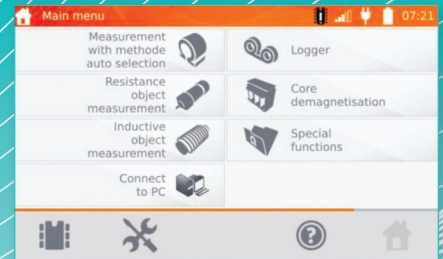


**PACIFIC TEST
equipment**

Key features of the MMR-650 include:

- Li-Ion battery power recharges in 3.5 hours
- Can be operated with mains power
- Over 700 10 Amp tests between charges
- Measurements from 0.1 $\mu\Omega$ to 2,000 Ω
- Class leading 0.25% accuracy
- Built-in back EMF discharge and de-magnetisation of windings
- Temperature compensation & heat run analysis with included temperature probe

- No switches!
The MMR-650 is fully controlled from the full colour touch screen just like your smart phone or tablet.



- Supplied with both Kelvin Clips and Kelvin Spike Probes
- USB, WiFi or LAN connectable, printer output, memory and Sonel Reader software
- 2-year warranty

Standard Inclusions

The Sonel MMR-650 standard kit includes:

- Sonel MMR-650 Micro-ohmmeter
- 2 x 3m Kelvin test leads
- 2 x Large Kelvin Clips
- 2 x Kelvin twin spike probes
- Temperature probe
- Mains power/charging lead
- USB data cable
- Sonel Reader Software
- User manual and calibration report
- Carry bag



Specifications

MEASUREMENT	
Ranges	1000 $\mu\Omega$, 2, 20, 200, 1000m Ω , 2, 20, 200, 2000 Ω
Resolution	0.1 $\mu\Omega$ to 0.1 Ω
Accuracy	$\pm 0.25\%$ reading +2 digits
Measurement time - resistive	3s
Measurement time - inductive	5s or greater
Protection from external voltage	600V AC for 10s
Communication	USB, WiFi & optional LAN
Memory	990 measurements in 10 banks of 99
POWER SUPPLY	
Battery	7.2V, 8.8Ah Li-Ion
AC Supply/charger	90-265V, 50Hz
Battery charging time	3.5 hours
Number of 10A tests per charge	700-800
Auto Off	User definable from 5 to 45 minutes or continuous
GENERAL	
Measurement Category	Cat 3, 600V to IEC 61010
User interface	800 x 400 Colour TFT graphical display
Protection grade	IP67 lid closed, IP54 lid open, IP40 lid open and mains powered
Dimensions & weight	318 x 257 x 152mm, 3.5kg
Working temperature	-10 to +50°C
Relative humidity	40 - 60%

Distributed and serviced by:

Pacific Test Equipment Pty Ltd

27/7 Anella Avenue Castle Hill 2154 | T +61 2 9659 2300

sales@pacifictest.com.au | www.pacifictest.com.au



PACIFIC TEST
equipment